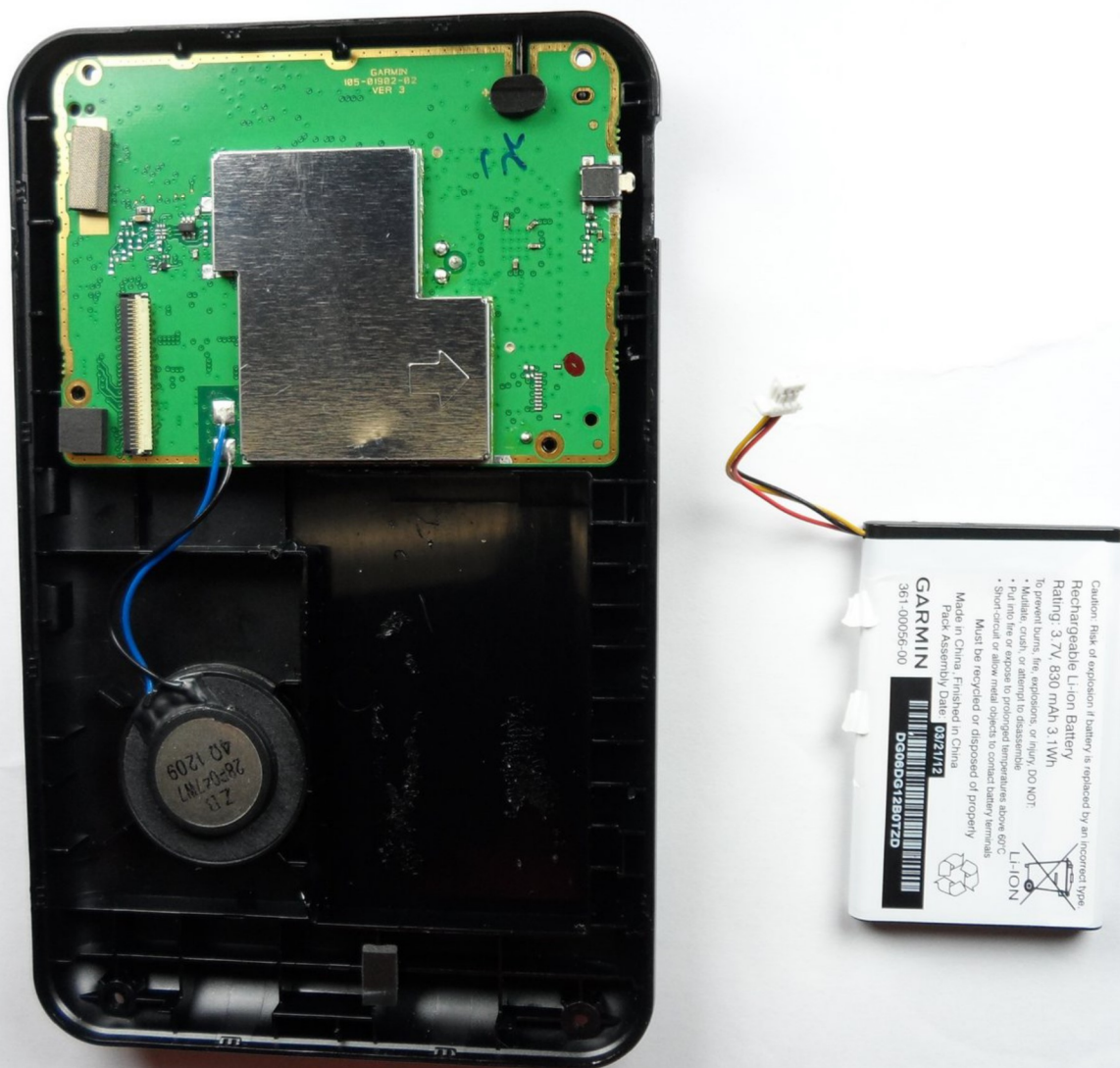




Garmin Nuvi 50LM Battery Replacement

This guide shows how to remove or replace the battery in your Garmin Nuvi 50LM.

Written By: Maurice Thomas



INTRODUCTION

Before replacing the battery, visit the device's [troubleshooting page](#) to determine whether you need to replace the battery. Follow the steps in this guide if you need to replace the battery.



TOOLS:

- [iFixit Opening Tools](#) (1)
- [T4 Torx Screwdriver](#) (1)



PARTS:

- [Garmin Nuvi 30/40/50 Replacement Battery](#) (1)

Step 1 — Battery Replacement



- Place the GPS face down on a flat surface.
- Make sure the side containing the speaker and charging port is facing up.

Step 2



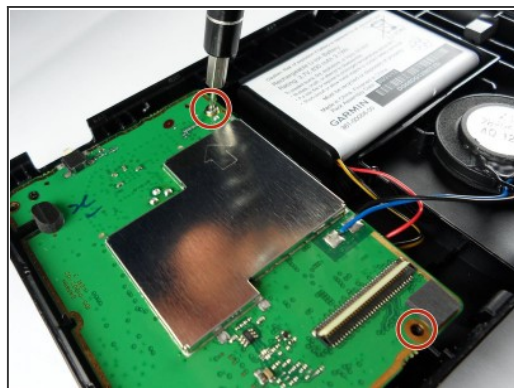
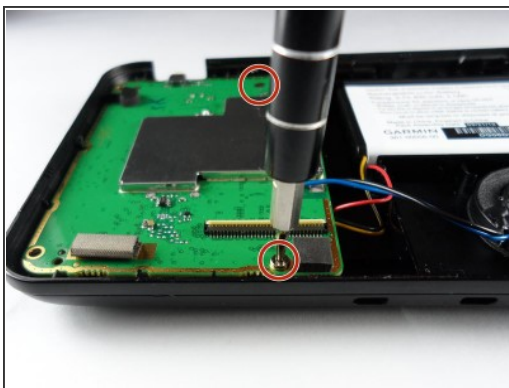
- Remove the four 9 mm screws on the back of the GPS with the T4 Torx screwdriver.

Step 3



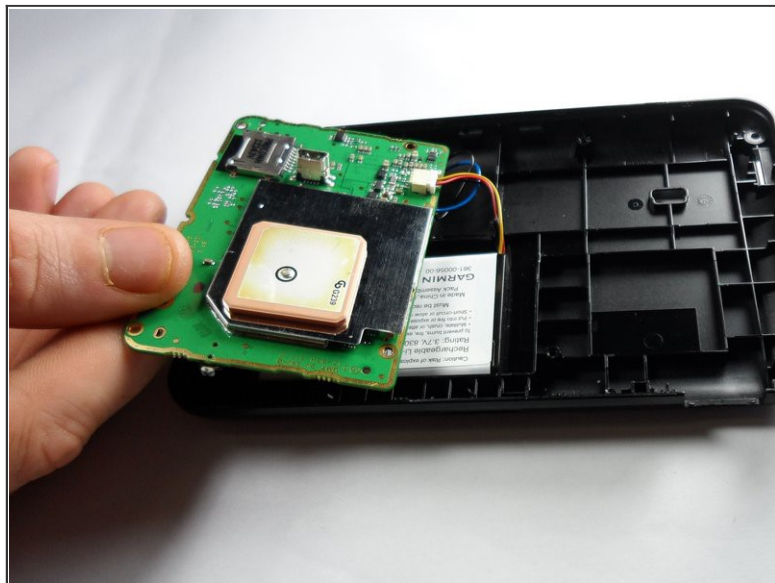
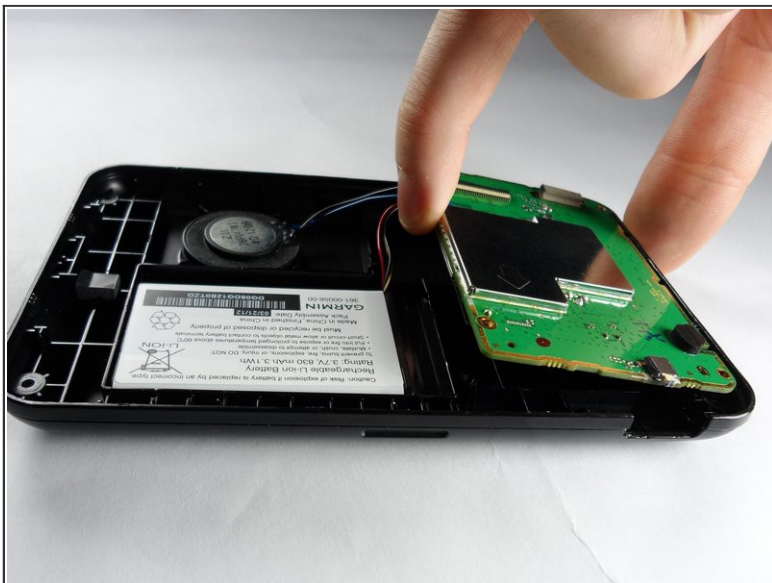
- Pry the GPS open using a plastic opening tool.
- ⓘ Avoid damaging the motherboard while opening the device.

Step 4



- After the GPS is open, remove the two 9 mm screws holding the motherboard in place.

Step 5



- Remove the motherboard from its designated location in the GPS.
- ⓘ Avoid damaging the blue and black speaker cables connected to the motherboard.

Step 6



- Unplug the red and yellow cables from the motherboard to remove the battery.

Step 7



- Carefully pry out the battery using a blue plastic opening tool.
- ⓘ You may need to apply a considerable amount of force to remove the battery from the GPS because an adhesive secures the battery to the rear case.

To reassemble your device, follow these instructions in reverse order.